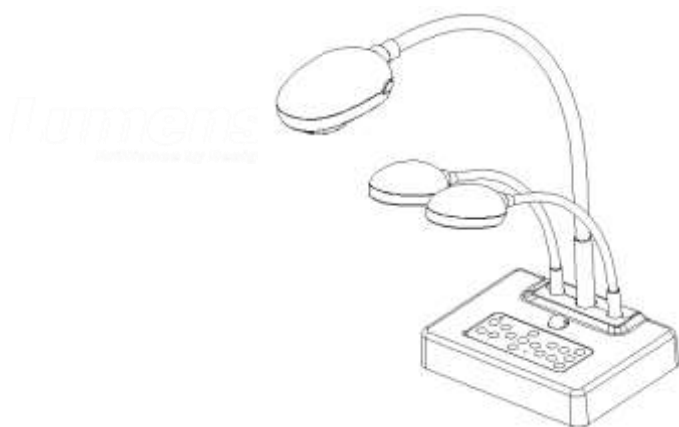


DC235 Visual Presenter

User Manual



[Important]

To download the latest version of quick start guide, multilingual user manual, software, or driver, etc., please visit Lumens <http://www.lumens.com.tw/goto.htm>

Contents

Copyright Information	3
Chapter 1 Precautions	4
Safety Precautions	5
FCC Warning.....	5
EN55022 (CE Radiation) Warning	5
Chapter 2 Package Content	6
Chapter 3 Product Overview	7
3.1 Relative position of the presenter and DC235	8
3.2 Recommend distance	8
3.3 Incorrect use	9
Chapter 4 Installation and Connections	10
4.1 System Diagram	10
4.2 Mounting the DC235 at Desktop	10
4.3 Connecting with components	10
4.4 Start Using the DC235.....	11
4.5 Installing application software.....	12
Chapter 5 DIP Switch Settings	13
5.1 SXGA output (default values):	13
5.2 XGA output:	13
Chapter 6 Introductions to Control Panel Buttons	14
Chapter 7 Descriptions of major functions	15
7.1 I would like to turn on / off the lamp.....	15
7.2 I would like to zoom in /out of images	15
7.3 I would like to use the auto focus	15
7.4 I would like to adjust the brightness	16

7.5	I would like to switch the pre/next screen of the live image (PAN)...	16
7.6	To be used in other applications.....	16
Chapter 8	Connecting to Microscope	22
Chapter 9	Troubleshooting.....	23

Copyright Information

Copyrights © Lumens Digital Optics Inc. All rights reserved.

Lumens is a trademark that is currently being registered by Lumens Digital Optics Inc.

Copying, reproducing or transmitting this file is not allowed if a license is not provided by Lumens Digital Optics Inc. unless copying this file is for the purpose of backup after purchasing this product.

In order to keep improving the product, Lumens Digital Optics Inc. hereby reserves the right to make changes to product specifications without prior notice. The information in this file is subject to change without prior notice.

To fully explain or describe how this product should be used, this manual may refer to names of other products or companies, nevertheless without any intention of infringement.

Disclaimer of warranties: Lumens Digital Optics Inc. is neither responsible for any possible technological, editorial errors or omissions, nor responsible for any incidental or related damages arising from providing this file, using, or operating this product.

Chapter 1 Precautions

Always follow these safety instructions when setting up and using the visual presenter:





1. Do not place visual presenter in tilted position.
2. Do not place the visual presenter on an unstable trolley, stand or table.
3. Do not use the visual presenter near water or source of heat.
4. Use attachments only as recommended.
5. Use the type of power source indicated on the visual presenter. If you are not sure of the type of power available, consult your dealer or local electricity company for advice.
6. Place the visual presenter on a place that it can be unplugged easily.
7. Always take the following precautions when handling the plug. Failure to do so may result in sparks or fire:
 - Ensure the plug is free of dust before inserting it into a socket.
 - Ensure that the plug is inserted into the socket securely.
8. Do not overload wall sockets, extensions leads or multi-way plug boards as this may cause fire or electric shock.
9. Do not place the visual presenter where the cord can be stepped on as this may result in fraying or damage to the lead or the plug.
10. Unplug the projector from the wall socket before cleaning. Use a damp cloth for cleaning. Do not use liquid or aerosol cleaners.
11. Do not block the slots and openings in the projector case. They provide ventilation and prevent the visual presenter from overheating. Do not place the visual presenter on a sofa, rug or other soft surface or in a built-in installation unless proper ventilation is provided.
12. Never push objects of any kind through cabinet slots. Never allow liquid of any kind to spill into the visual presenter.
13. Except as specifically instructed in this User Manual, do not attempt to operate this product by yourself. Opening or removing covers may expose you to dangerous voltages and other hazards. Refer all servicing to licensed service personnel.
14. Unplug the visual presenter during thunderstorms or if it is not going to be used for an extended period, do not place the visual presenter or remote control on top of heat-emitting equipment or heated objects such as a car and etc.
15. Unplug the visual presenter from the wall outlet and refer serving to licensed service personnel when the following situations happen:
 - If the power cable or plug becomes damaged or frayed.
 - If liquid is spilled into it or the visual presenter has been exposed to rain or water.

■ Safety Precautions

Warning: To reduce the risk of fire or electric shock, do not expose this appliance to rain or moisture.

This visual presenter has a 3-wire AC line Plug. This is a safety feature to ensure that the plug will fit into the power outlet. Do not try to disable this safety feature.

If the visual presenter will not be used for a long period of time unplug it from the power outlet.

	<table border="1"><tr><td>CAUTION</td></tr><tr><td>RISK OF ELECTRIC SHOCK</td></tr></table>	CAUTION	RISK OF ELECTRIC SHOCK	
CAUTION				
RISK OF ELECTRIC SHOCK				
Note: To reduce the risk of electric shock. Do not remove cover (or back). No user-serviceable parts inside. Refer servicing to licensed service Personnel.				
	This symbol indicates that this equipment may contain dangerous voltage which could cause electric shock.		This symbol indicates that there are important operating and maintenance instructions in this User Manual with this unit.	

■ FCC Warning

This equipment has been tested and found to comply with the limits for a Class A or B digital device, pursuant to Part 15 of FCC Rules. These limits are designed to provide reasonable protection against harmful interference in a residential installation.

■ EN55022 (CE Radiation) Warning

This product is intended for use in a commercial, industrial, or educational environment. It is not intended for residential use.

This is a Class A product. In a domestic environment it may cause radio interference, in which case the user may be required to take adequate measures. The typical use is in a conference room, meeting room or auditorium.

Chapter 2 Package Content

DC235



Quick Start Guide



User Manual

(For download of other language versions, please visit Lumens website)



Base Installation Guide



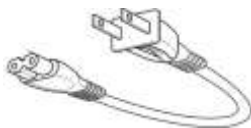
Download Card



USB Cable



Power Cord



Appearance may vary with country/region

Microscope Adapter



Software Bag



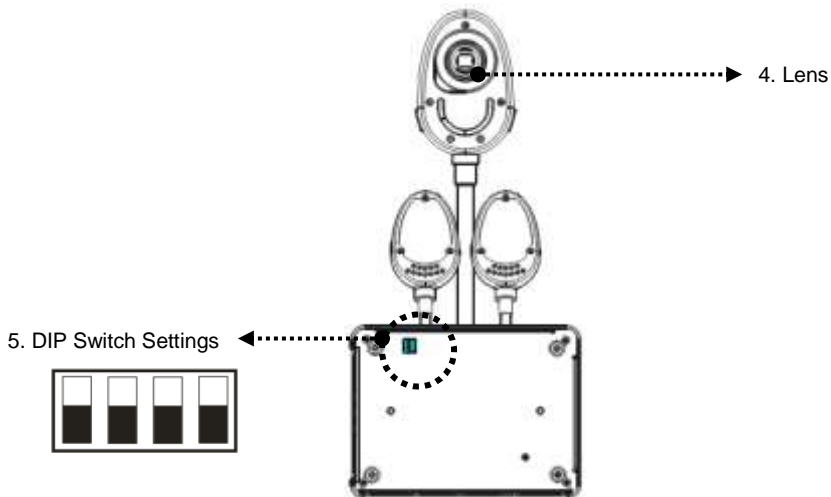
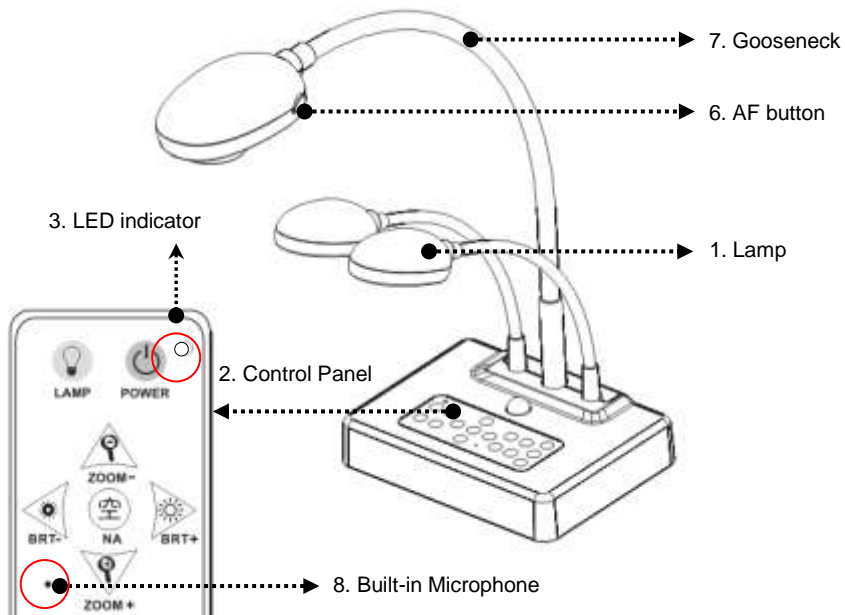
Padded Carry Bag
(Optional)



Backlight (Optional)

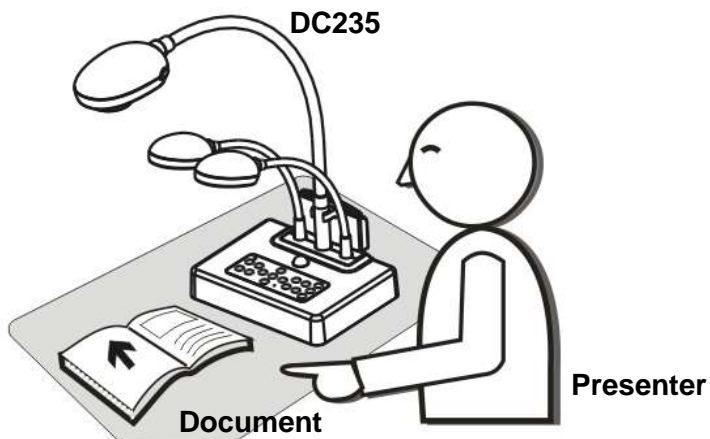


Chapter 3 Product Overview



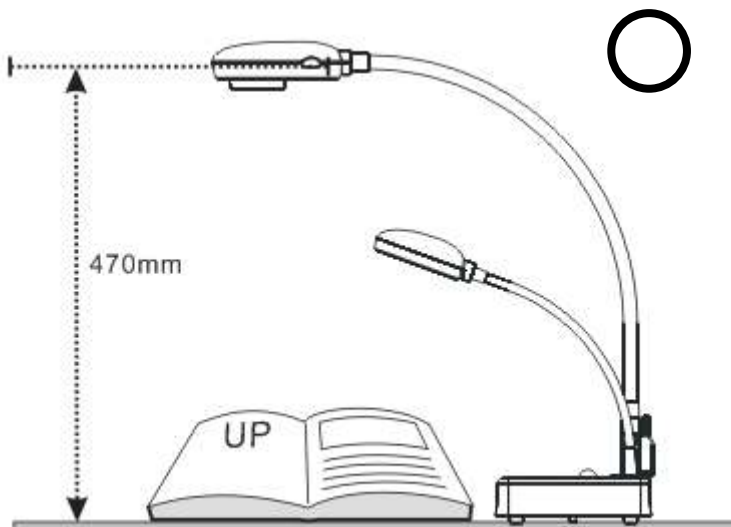
(Bottom)

3.1 Relative position of the presenter and DC235

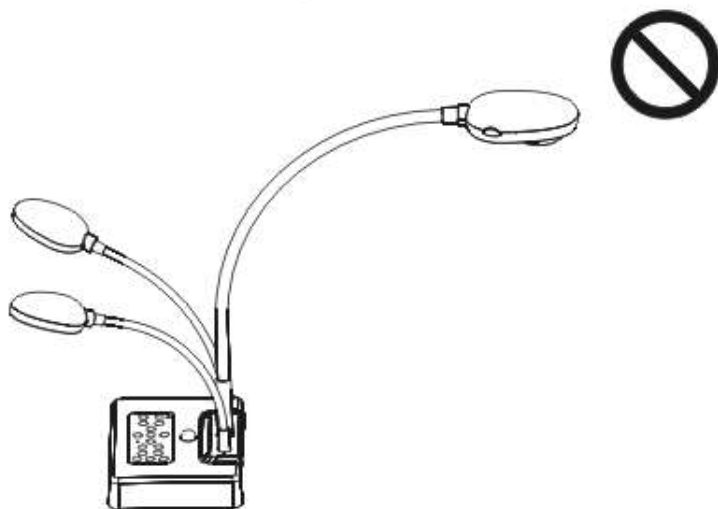
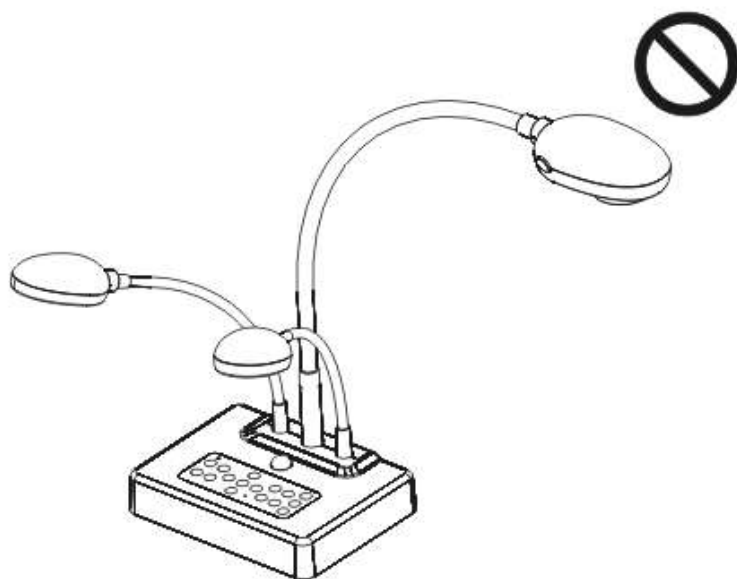


3.2 Recommend distance

* About 470 mm distance between camera and the desktop is recommended.

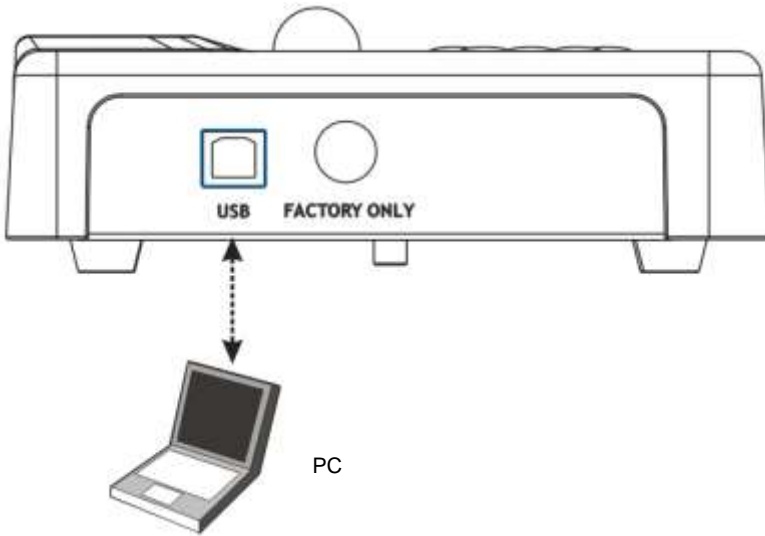


3.3 Incorrect use



Chapter 4 Installation and Connections

4.1 System Diagram

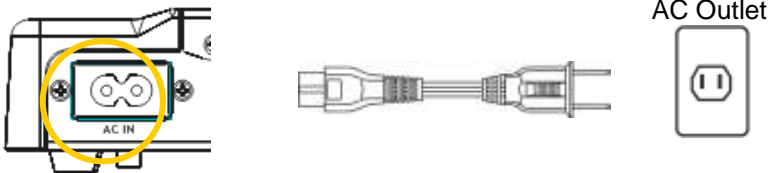


4.2 Mounting the DC235 at Desktop

1. Please set up the DIP Switch settings first. Refer to [Chapter 5 DIP Switch Settings](#) in the DC235 user manual.
2. Please refer to the [Base Installation Guide](#) for installation instructions for all parts.

4.3 Connecting with components

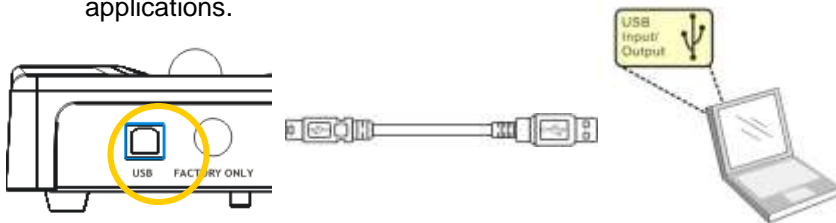
4.3.1 Step 1: Plugging in the Power Outlet



<Note>: Appearance of power cord may vary with countries/regions

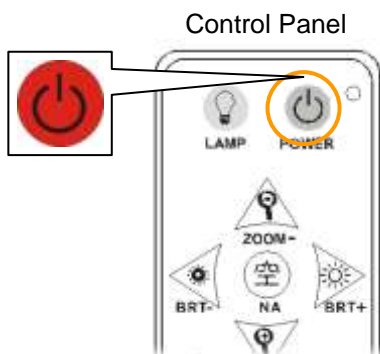
4.3.2 Step 2: Connecting to a Computer

Use a USB cable to connect to a computer and install drivers and applications.



4.4 Start Using the DC235

Once DC235 is turned on, the LED on the control panel will flash a few times and stay lit. Please contact your distributor if the LED is not on.



4.5 Installing application software

After installing the USB driver and application software, you can use the following functions:

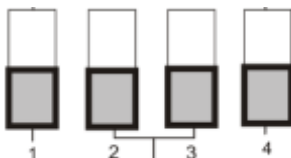
- Control the DC235.
- Capture and record images.
- Annotate the image, highlight important details and save it.
- Support the full screen function.

<Note>: Please refer to Ladibug™ software user manual for installation steps and software operation.

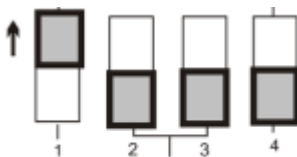
Chapter 5 DIP Switch Settings

<Note>: You must re-start DC235 for DIP switching configuration to take effective.

5.1 SXGA output (default values):




5.2 XGA output:



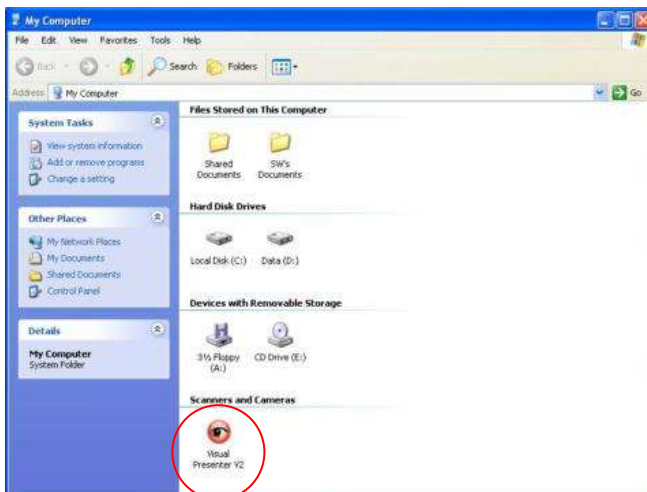
Chapter 6 Introductions to Control Panel Buttons

<Remark> The below functions are listed alphabetically

Name	Function Descriptions
	Turn on and off the visual presenter.
◀, ▶, ▲, ▼	Move up, down, left or right to select the needed function.
AUTO TUNE	Automatically adjust the image to have the best brightness and focusing performance.
BRT +/-	Manually adjust the brightness of the image.
FREEZE	Freeze the current image to temporarily stay on the screen. Press again to defreeze.
PAN	Switch a part of the live image.
LAMP	Turn on / off the lamp.
ROTATE	Rotate the image by 0°/90°/180°/270°
ZOOM +/-	Increase or decrease the image size.

Chapter 7 Descriptions of major functions

1. To use DC235, it must be connected to a computer. Please complete USB connection and installing drivers first. Please refer to [Chapter 4 Installation and Connections](#) of this User Manual.
2. Select [Cisual Presenter V2] to open live screen.



7.1 I would like to turn on / off the lamp

1. The lamp is ON by default. Press [Lamp] to switch ON/OFF.

7.2 I would like to zoom in /out of images

1. Press [Zoom +] to zoom in the image.
2. Press [Zoom -] to zoom out the image.

7.3 I would like to use the auto focus

1. Press the AF button on the camera head of main unit.

7.4 I would like to adjust the brightness

1. Press [BRT +] to increase the brightness.
2. Press [BRT -] to decrease the brightness.

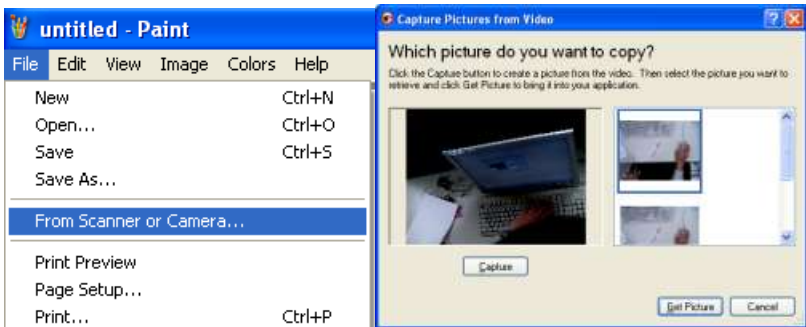
7.5 I would like to switch the pre/next screen of the live image (PAN)

1. Press [PAN] to enter the image pan mode.
2. Press [▲] or [▼] or [◀] or [▶] to move and view the partial enlarged images.
3. Press [PAN] to exit the partial enlarged mode.

7.6 To be used in other applications

7.6.1 I would like to insert a photo in MS-Paint

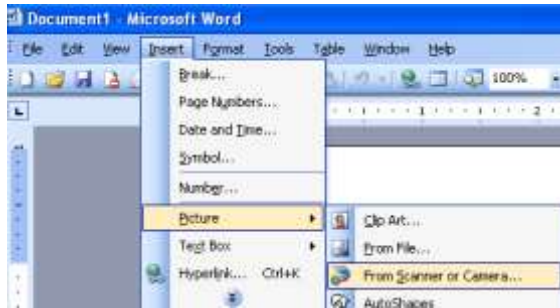
1. Click [File/From Scanner or Camera] in MS-Paint shown as the bottom left figure.



2. Click [Get Picture] will capture the photos of live images and insert the files in use shown as top right figure.

7.6.2 I would like to insert a photo in *MS-Word*

1. Click [Insert / Image / From Scanner or Camera] in *MS-Word*.



2. Select [Visual Presenter V2] and click [Custom Insert].

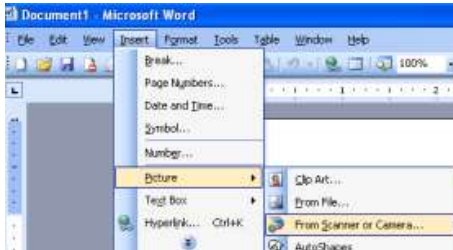


3. Click [Get Picture]. It will capture the photo of live image.



7.6.3 I would like to change the setting of DC235 then capture a photo in *MS-Word*

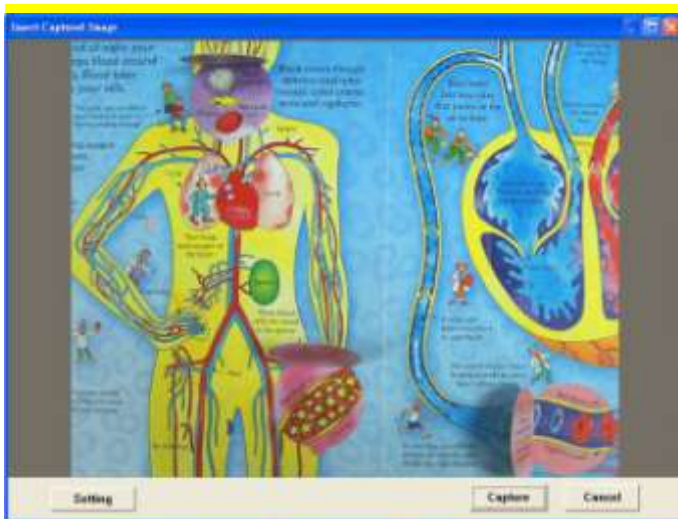
1. Click [Insert / Image / From Scanner or Camera] in *MS-Word*.



2. Select [Visual Presenter V2 TWAIN] and click [Custom Insert].



3. A window showing a live image (see below) will be displayed:



4. Press [Setting]

You are allowed to adjust the live image by exiting the Camera Settings window.

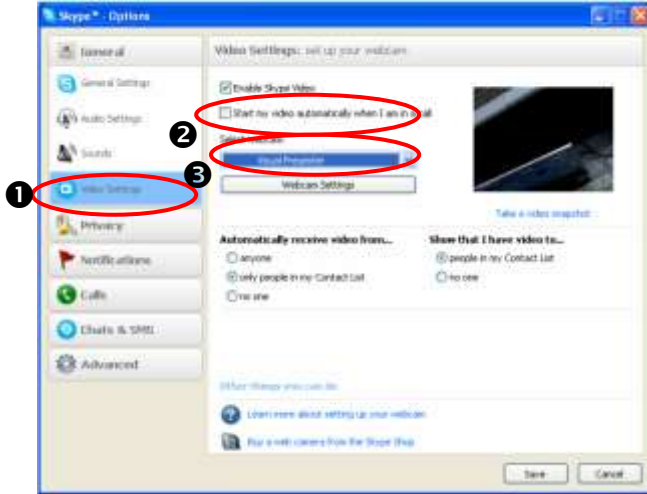
5. Press [Capture] to capture images in **MS-Word**.

6. Press [Cancel] to exit.

7.6.4 I would like to set the DC235 as a webcam for **Skype**

The DC235 can be used as a webcam for teleconferencing software such as **Skype** and **MSN**. The following instructions use **Skype** as an example:

1. Open **Skype** and enter [Tools] > [Options].
2. Select [Video Settings] > [webcam] > [Visual Presenter V2] and check Start my video automatically when I am in a call, as shown below.



3. Start calling your contact. When both sides are connected, **Skype** will display the video screen.

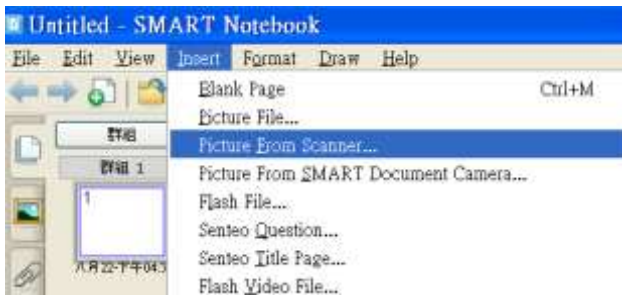




- 2.4 Press [StarBoard] / [Mode] / [TWAIN]
Please refer to [7.10.2 I would like to insert a photo in MS-Word](#) for operation

3. Using StarBoard

- 3.1 Press [Insert] / [Picture From Scanner]



- 3.2 Please refer to [7.10.2 I would like to insert a photo in MS-Word](#) for operation

Chapter 8 Connecting to Microscope

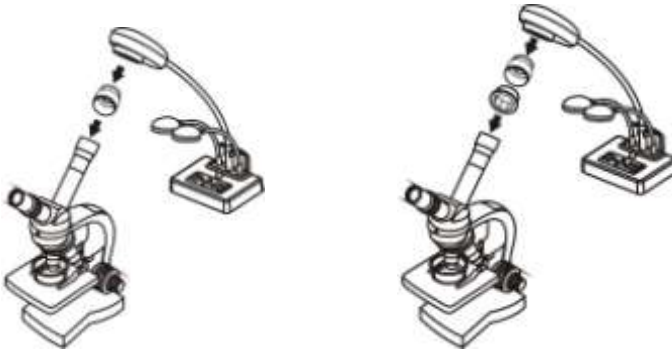
1 Mount the **microscope adaptor** onto the microscope.

<Note> Please choose an appropriate microscope adapter. Microscope adapter accessories are applicable to eyepieces of Ø28mm, Ø31mm, Ø33mm, and Ø34mm.

2 The lens of DC235 connects with the **microscope adaptor**.

If the eyepiece is Ø33mm or Ø34mm, only one Lumens microscope adapter is needed.

If the eyepiece is Ø28mm or Ø31mm, you need two microscope adapters. (1. The Lumens microscope adapter. 2. The microscope adapter suitable for the eyepiece size Ø28mm or Ø31mm.)



3 Select the [Microscope] Mode

3.1. Using **TWAIN driver**

3.1.1. Click [Insert/Image/From Scanner or Camera] in MS-Word or MS-Paint

3.1.2. Select [Visual Presenter V2 TWAIN] and then click [Custom Insert] to open Live Image window

3.1.3. Click [Setting] to close [Camera Settings] window

3.1.4. Press [M Scope]

4 If the image is not clear

4.1. Press the [AF] button on the camera head of main unit to activate the auto focus

5 Zooming In or Zooming Out the image.

5.1. Press [Zoom +]/[Zoom -] on the **control panel**

Chapter 9 Troubleshooting

This chapter describes problems you may encounter while using DC235. If you have questions, please refer to related chapters and follow all the suggested solutions. If the problem still occurred, please contact our distributors or service center.

No.	Issues	Solutions
1	Boot without power	Make sure you have plugged in the power cord.
2	Unable to focus	Probably the document is too close. Press [Zoom -] on the control panel . Or pull the document away from the lens. And then press [AF] button on both lateral sides of the lens.
3	Visual Presenter V2, Ladibug™ or other application cannot be executed simultaneously	Visual Presenter V2, Ladibug™ and other applications cannot be executed simultaneously. Only one application can be executed at a time. Please close the currently running applications and then execute the application to be used.